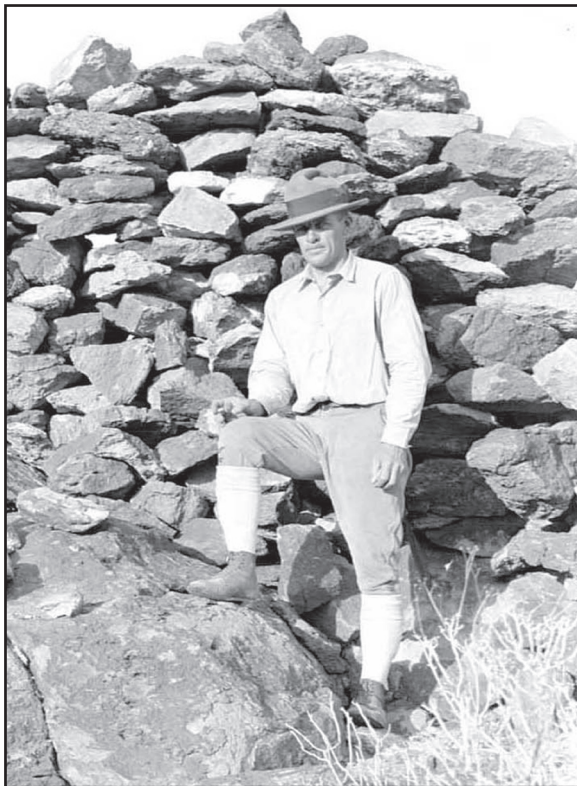


Pacific Coast Archaeological Society Quarterly

Volume 48, Numbers 3 and 4



Assessing the Contributions of Malcolm J. Rogers

Pacific Coast Archaeological Society Quarterly

Volume 48, Numbers 3 and 4



Guest Editor

Don Laylander

Editor

Henry C. Koerper

Production Editor

Rene Brace

Publications Committee

Bob Brace, Gail Cochlin, Scott Findlay, Megan Galway, Mark Roeder,
and Kathleen Shada

Pacific Coast Archaeological Society Quarterly

The *Pacific Coast Archaeological Society Quarterly* is a publication of the Pacific Coast Archaeological Society (PCAS), which was organized in 1961. PCAS is an avocational group originally founded to study and to preserve the anthropological and archaeological history of the original inhabitants of Orange County, California, and adjacent areas. The Publications Committee invites the submittal of original contributions dealing with regional history and prehistory. Although PCAS is especially interested in reports which shed further light on the early inhabitants of coastal southern California, it always welcomes reports on the wider Pacific Coast region.

Information about subscriptions to the *Pacific Coast Archaeological Society Quarterly* and the *PCAS Newsletter* is available online at www.pcas.org. Back issues of the *Pacific Coast Archaeological Society Quarterly* are available. An index to Volumes 1 through 40 is available as Volume 40, Numbers 3 & 4. This searchable index is online at www.pcas.org. Four *Occasional Papers* (on Catalina Island, Mexican Majolica, and the Peralta Adobe and a remembrance of H. B. Nicholson) have also been published by PCAS. To place an order, receive information about the Pacific Coast Archaeological Society, or submit an article for publication, email publications@pcas.org or write: Pacific Coast Archaeological Society, PO Box 10926, Costa Mesa, California, 92627. Additional information is available at www.pcas.org. PCAS is not responsible for delivery of publications to subscribers who have not furnished a timely change of address.

Recent issues of the *Pacific Coast Archaeological Society Quarterly* are available at www.pcas.org and can be downloaded and viewed but not printed. Articles appearing in the *Pacific Coast Archaeological Society Quarterly* are abstracted in *Historical Abstracts* and *America: History and Life*. This issue of the *Pacific Coast Archaeological Society Quarterly* is copyrighted © 2013 by the Pacific Coast Archaeological Society. ISSN 0552-7252.

PCAS Officers 2012

President	Scott Findlay
Vice President	Joe Hodulik
Secretary	Kathleen Shada
Treasurer	Bob Brace

Please note that this issue was published in July 2013. In the PCAS Quarterly publication sequence, this issue is Volume 48, Numbers 3 & 4 (subscription year 2012).

Contents

Introduction: The Contributions of Malcolm J. Rogers to the Development of California Archaeology	1
Ruth Musser-Lopez, Don Laylander, and David C. Hanna, Jr.	
Malcolm J. Rogers' Career and Context	7
David C. Hanna, Jr.	
Malcolm J. Rogers in the Mojave and Colorado Deserts	13
Joan S. Schneider	
Malcolm J. Rogers' 1938 Excavation Techniques at the C. W. Harris Site (CA-SDI-149)	21
Claude N. Warren	
Malcolm Rogers' Arizona Fieldwork, 1926–1956	31
Jerry Schaefer	
Malcolm Rogers in Baja California	43
Don Laylander and Julia Bendímez Patterson	
The Development of Cultural Sequences in the Mojave Desert: The Contributions of Malcolm J. Rogers	57
Mark Q. Sutton	
Malcolm Rogers and Rock Art Research in the Far Southwest	65
Ken Hedges	
Malcom Rogers: Geoarchaeologist	75
Andrew R. Pigniolo	
Malcolm Rogers: Ancient Trails and Rock Features	89
Rebecca Apple	

Malcolm J. Rogers on Archaeological Ceramics:
Foundations and Current Studies in the San Diego Region 97
Margie M. Burton and Patrick S. Quinn

Malcolm J. Rogers As an Ethnoarchaeologist:
Reflections from Santa Catarina, Baja California 109
Lee M. Panich and Michael Wilken-Robertson

Cover: Malcolm J. Rogers at La Forteleza (Museum of Man Site A-64), Gila Bend, Arizona.
Copyright San Diego Museum of Man.

About the Guest Editor

Don Laylander, a Senior Archaeologist at ASM Affiliates in Carlsbad, California, has a BA in history from UCLA and an MA in anthropology from San Diego State University. His Master's thesis addressed "Sources and Strategies for the Prehistory of Baja California," and together with Jerry D. Moore, he edited *The Prehistory of Baja California: Advances in the Archaeology of the Forgotten Peninsula* (2006). In several dozen publications he has explored diverse aspects of archaeological, ethnological, and linguistic approaches to reconstructing the prehistory of Alta and Baja California.

About the Authors

Rebecca Apple is a Principal and Senior Archaeologist at AECOM Technology Corporation in San Diego. She received her MA degree in anthropology from San Diego State University in 1990, writing her thesis on *Archaeological Investigations in the Koso Ethnographic Area*. Among her publications is “Pathways to the Past” (2005), a study of prehistoric trail systems in the Colorado Desert that was based on field investigations, archival research, and GIS modeling.

Julia Bendímez Patterson has been the *delegada* for Mexico’s Instituto Nacional de Antropología e Historia (INAH) in Baja California since 1986. A graduate of San Diego State University, her publications have included archaeological and ethnographic studies focused on the northern half of the Baja California peninsula.

Margie M. Burton received her BS/BA in biological sciences and anthropology from Stanford University and her MA and Ph.D. in anthropology from the University of California, San Diego. She is currently Research Director at the San Diego Archaeological Center. She has participated in archaeological field projects in Israel and California. Her research interests include social evolution and collapse, craft specialization, and prehistoric ceramic and ground stone technology and function. She has authored and coauthored articles published in edited volumes and journals including *Radiocarbon*, *Journal of Field Archaeology*, *Nature*, and *Proceedings of the Society for California Archaeology*.

David C. Hanna, Jr., earned a BA in sociology-anthropology from Occidental College and an MA in anthropology from San Diego State University. His archaeological training included a pre-high school summer school class under Jerry Lipetsky, a summer internship at the San Diego Museum of Man, and field schools in the Malibu Mountains and at Caesarea Maritima in Israel. He has worked since 1975 in private and public cultural resource management throughout California and southern Arizona, with added roles in CEQA and NEPA project management and regulatory permitting. Dave currently serves as an archaeologist in the Corporate Environmental Services Department at Southern California Edison.

Ken Hedges is Emeritus Curator of California Collections at the San Diego Museum of Man. In 1970 his Master’s thesis at San Diego State University presented *An Analysis of Diegueño Pictographs*. A founding member of the American Rock Art Research Association and co-founder of the annual Museum of Man Rock Art Symposium, he has published numerous studies on the rock art of western North America, and he has edited the museum’s *Rock Art Papers* series.

Ruth Musser-Lopez attended the University of California, Los Angeles, and the University of California, Riverside, receiving her BA with Honors in Anthropology in 1976. Her interest in the work of Malcolm J. Rogers began while she assisted at UCR’s Archaeological Research Unit and prepared reports for the *Journal of California*

and Great Basin Anthropology. She has conducted research and cultural resource conservation in the southern California deserts, coast, and lower Colorado River region. She has served as Archaeologist for the Bureau of Land Management and presently is Principal of the River Branch of the Archaeological Heritage Association (RiverAHA). Since 1979, she has contributed work on prehistoric rock art and trails, ethnohistory, and cultural resource management. Her recent research on the origin of the “Mystic Maze” gravel alignments rekindled her interest in the impact of Rogers’ work on others, and that led, in part, to the 2012 SCA symposium papers published in this *PCAS Quarterly* double-issue.

Lee M. Panich is an Assistant Professor of Anthropology at Santa Clara University. He received his BA from Brown University and his MA and Ph.D. from the University of California, Berkeley. His research focuses on long-term trends involving the indigenous peoples of Alta and Baja California and their interactions with Euro-American colonists. From 2005 to 2009, he conducted an archaeological and ethnohistorical research project focused on the indigenous inhabitants of Mission Santa Catalina in Baja California. He is currently working on a binational study of obsidian availability and conveyance in Baja California, as well as an archaeological investigation of Native American life at Mission Santa Clara de Asís in Alta California.

Andrew R. Pigniolo is the President of Laguna Mountain Environmental, Inc., in San Diego, where he serves as Principal Investigator/Project Manager. Many of his publications have focused on geoarchaeological issues in southern California, including his 1992 Master’s thesis at San Diego State University on *Distribution of Piedra de Lumbre “Chert” and Hunter-Gatherer Mobility and Exchange in Southern California*.

Patrick S. Quinn is an archaeological materials scientist working at the Institute of Archaeology, University College London. His research centers on the interpretation of cultural signals in ancient ceramics and related materials in terms of trade, exchange, craft technology, and tradition. He uses thin-section petrography, geochemistry, and scanning electron microscopy to investigate artifacts from Britain, Greece, and California. He received his Ph.D. from the University of Sheffield, United Kingdom, in 1999 on the application of micropalaeontology to archaeological materials.

Jerry Schaefer received his BA from the City College of the City University of New York and his MA and Ph.D. from the University of Arizona. He is known principally for his work in the Colorado Desert and especially the archaeology of ancient Lake Cahuilla. He is also known for research on the ceramics of the Colorado and Mojave deserts. Over his 32-year career, he has frequently walked in Malcolm Rogers’ footsteps throughout southwestern Arizona, including major work at the White Tanks archaeological district and the southwestern Papaguería. Dr. Schaefer is a Principal at ASM Affiliates, Inc., in Carlsbad.

Joan S. Schneider is Associate State Archaeologist in the Colorado Desert District of the California Department of Parks and Recreation and an Assistant Research Anthropologist at the University of California, Riverside. At UCR, her 1987 Master’s thesis was on *Archaeological Investigations at Afton Canyon (CA-SBR-85) Mojave*

Desert, San Bernardino County, California, and her Ph.D. dissertation examined *Aboriginal Milling-Implement Quarries in Eastern California and Western Arizona: A Behavioral Perspective*. She has conducted archaeological studies for more than 25 years in the Colorado, Mojave, Sonoran, and Negev deserts.

Mark Q. Sutton began his career in 1968, working at a site with the local community college while still in high school. He went on to earn a BA (1972), an MA (1977), and a Ph.D. (1987) in anthropology. He has worked for the US Air Force, the US Bureau of Land Management, and various private consulting firms, and he taught at a number of community colleges and universities. He taught at California State University, Bakersfield, from 1987 to 2007, where he retired as Emeritus Professor of Anthropology. He now works for Statistical Research, Inc., in San Diego. From 1986 to 2000, Dr. Sutton served as the Editor of the *Journal of California and Great Basin Anthropology*. Dr. Sutton has investigated hunter-gatherer adaptations to arid environments, entomophagy, prehistoric diet and technology, and the prehistory of California. Dr. Sutton has worked at more than 120 sites in western North America, has presented some 126 papers at professional meetings, and has published some 185 books, monographs, articles, and reviews on archaeology and anthropology, including the following textbooks: *Introduction to Native North America*; *A Prehistory of North America*; *Archaeology: Science of the Human Past*; *Introduction to Cultural Ecology*; *Paleonutrition*; and *Laboratory Methods in Archaeology*.

Claude N. Warren is Distinguished Professor Emeritus in Anthropology at the University of Nevada, Las Vegas. Among his numerous publications is *The San Dieguito Type Site: M. J. Rogers' 1938 Excavation on the San Dieguito River* (1966), as well as accounts of his own excavations at the C. W. Harris site. His contributions were celebrated in a 2000 festschrift, *Archaeological Passages: A Volume in Honor of Claude Nelson Warren*.

Michael Wilken-Robertson is an applied cultural anthropologist specializing in Native peoples of Baja California. His research interests include the ethnography of Baja California and linkages with Yuman peoples of California and Arizona, material culture and technology, cultural revitalization, traditional indigenous environmental management, and sustainable community development. This research is disseminated through publications, collaborative indigenous community projects, museum exhibits, and the organization of binational activities that promote the unique anthropological heritage of Baja California. Wilken-Robertson currently teaches at California State University, San Marcos.