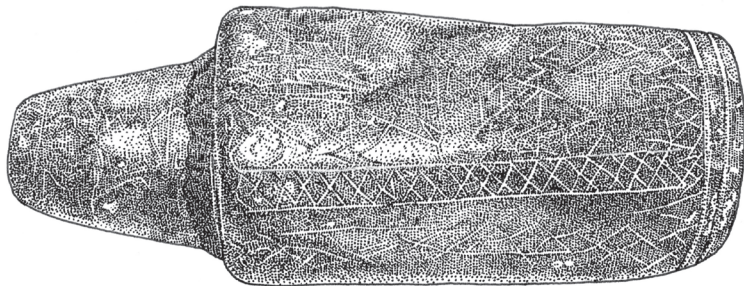


Pacific Coast Archaeological Society Quarterly

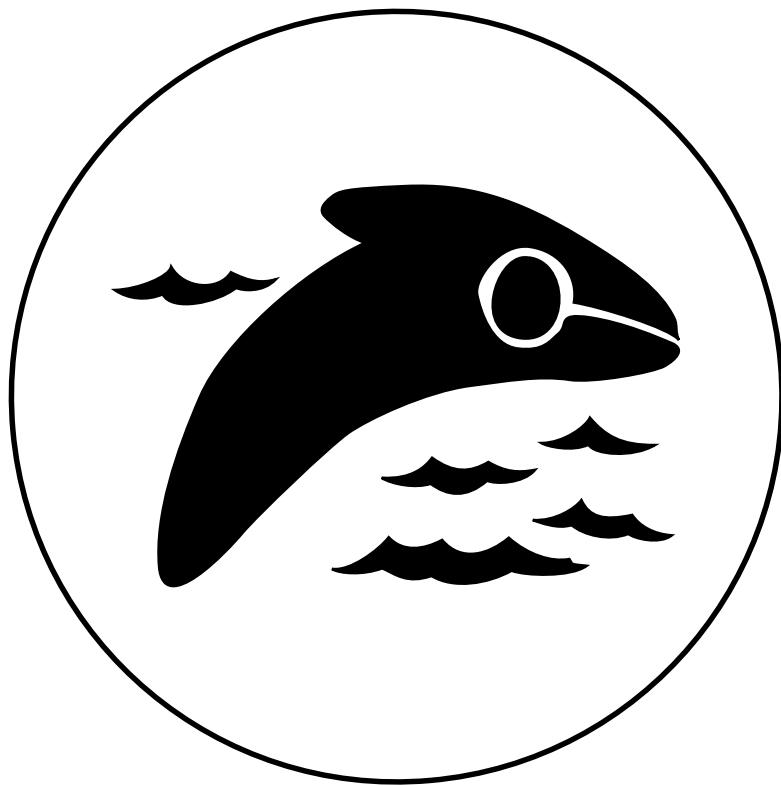
Volume 49, Numbers 1 and 2



California Prehistory

Pacific Coast Archaeological Society Quarterly

Volume 49, Numbers 1 and 2



Editor

Henry C. Koerper

Production Editor

Rene Brace

Publications Committee

Bob Brace, Linda Christison, Gail Cochlin, Scott Findlay, Megan Galway, Sherri Gust,
Joe Hodulik, Stephen O'Neil, Mark Roeder, Kathleen Shada, and Brian Steffensen

Pacific Coast Archaeological Society Quarterly

The *Pacific Coast Archaeological Society Quarterly* is a publication of the Pacific Coast Archaeological Society (PCAS), which was organized in 1961. PCAS is an avocational group originally founded to study and to preserve the anthropological and archaeological history of the original inhabitants of Orange County, California, and adjacent areas. The Publications Committee invites the submittal of original contributions dealing with regional history and prehistory. Although PCAS is especially interested in reports which shed further light on the early inhabitants of coastal southern California, it always welcomes reports on the wider Pacific Coast region.

Information about subscriptions to the *Pacific Coast Archaeological Society Quarterly* and the *PCAS Newsletter* is available online at www.pcas.org. Back issues of the *Pacific Coast Archaeological Society Quarterly* are available. An index to Volumes 1 through 40 is available as Volume 40, Numbers 3 & 4. This searchable index is online at www.pcas.org. Four *Occasional Papers* (on Catalina Island, Mexican Majolica, and the Peralta Adobe and a remembrance of H. B. Nicholson) have also been published by PCAS. To place an order, receive information about the Pacific Coast Archaeological Society, or submit an article for publication, email publications@pcas.org or write: Pacific Coast Archaeological Society, PO Box 10926, Costa Mesa, California, 92627. Additional information is available at www.pcas.org. PCAS is not responsible for delivery of publications to subscribers who have not furnished a timely change of address.

Recent issues of the *Pacific Coast Archaeological Society Quarterly* are available at www.pcas.org and can be downloaded and viewed but not printed. Articles appearing in the *Pacific Coast Archaeological Society Quarterly* are abstracted in *Historical Abstracts* and *America: History and Life*. This issue of the *Pacific Coast Archaeological Society Quarterly* is copyrighted © 2014 by the Pacific Coast Archaeological Society. ISSN 0552-7252.

PCAS Officers 2013

President	Megan Galway
Vice President	Joe Hodulik
Secretary	Brian Steffensen
Treasurer	Bob Brace

Please note that this issue was published in January 2014. In the PCAS Quarterly publication sequence, this issue is Volume 49, Numbers 1 & 2 (subscription year 2013).

Contents

A “Cold Case” Archaeofauna from Torqua Cave (CA-SCAI-32), Santa Catalina Island	1
Judith F. Porcasi	
Marine Mammal Ear Bones as Charms/Curiosities	13
Henry C. Koerper, Galen Hunter, Ivan Snyder, and Joe Cramer	
Five Effigies with Possible to Probable Cetacean Referent	21
Henry C. Koerper, Galen Hunter, and Ivan Snyder	
On the Anatomy of the Malaga Cove Site	37
Henry C. Koerper and Mark L. Peterson	
A Unique Tubular Artifact from Abalone Cove, Palos Verdes Peninsula	63
Ivan Snyder and Henry C. Koerper	
Health and Nutritional Status at CA-SOL-451 (Encinosa Site): Biological Interpretations and Regional Comparisons	85
Lisa Bright and Eric J. Bartelink	
Subsistence Remains and Intensification on the Newport Coast, Orange County, California	106
Roger D. Mason and Mark L. Peterson	
Trade and Exchange on the Newport Coast, Orange County, California	127
Roger D. Mason	
Cover: Compound tubular artifact found at Abalone Cove, Palos Verdes Peninsula. Drawn by Joe Cramer.	

About the Authors

Eric Bartelink, Ph.D., is an Associate Professor in the Department of Anthropology and Director of the Human Identification Laboratory at California State University, Chico. He received his BS in Anthropology at Central Michigan University (1995), his MA in Anthropology at California State University, Chico (2001), and his Ph.D. in Anthropology at Texas A&M University (2006). His research focuses on bioarchaeological approaches for studying diet, health, and violence in prehistoric California, as well as methods and techniques in forensic anthropology.

Lisa Bright, MA, is a lecturer in the Department of Anthropology at California State University, Chico. She received her BS in Anthropology at Michigan State University (2007) and her MA in Anthropology at California State University, Chico (2011). Her research focuses on bioarchaeological approaches for studying health and forensic taphonomy.

Joe Cramer, MA and MFA, received his formal education in art at California State University, Fullerton, with a concentrated area of study in ceramic sculpture. He currently teaches ceramic art classes at Menifee Valley College and Rio Hondo College. Since 1982, he has enjoyed working in his spare time as an illustrator of academic articles, books, and associated materials for southern California archaeologists and institutions.

Galen Hunter, BA, studies and documents the natural history and archaeology of the waterfront area on the southwest coast of Santa Monica Bay from the bluffs of Malaga Cove to the Old Salt Lake. His interest is to try and salvage culture in part by leveraging the techniques he has learned in his seventeen year career as a web developer. His formal education includes an AA from Santa Monica College and a BA in social science with an emphasis in history from the University of California, Santa Barbara.

Henry Koerper, Ph.D., received a BA (1965) and an MA (1968) from UC Davis, and he earned a Ph.D. in anthropology at UC Riverside in 1981. His varied employments have included: CDF firefighter; USFS fire suppression field and laboratory researcher; California Army National Guard explosives technician; archaeological field excavator (e.g., Old Sacramento Project, Prescott College Black Mesa Project); Peace Corps teacher and athletic coach (Voi Harambee High School, Kenya); college anthropology professor (Chapman College [5 years] and Cypress Community College [30 years]); and archaeological consultant to several southern California CRM firms. Semi-retirement allows Dr. Koerper time to help produce the *PCAS Quarterly*.

Roger D. Mason, Ph.D., RPA, has been a principal investigator and project manager for cultural resources management projects in southern California since 1983. Prior to coming to California, he carried out archaeological research in Mesoamerica and Missouri, and he received his Ph.D. from the University of Texas in 1980. He was Principal Investigator for the Newport Coast and San Joaquin Hills Transportation Corridor data recovery projects in coastal Orange County. He is Director of Cultural Resources at ECORP Consulting.

Mark Peterson, MA, has worked in cultural resources management in southern California since 1978. His work includes data modeling, studies of marine invertebrate remains, forensics, radiocarbon analyses, and geophysical surveys. He received his MA in Social Ecology from the University of California, Irvine in 1994. He was principal author for the Bonita Mesa Archaeological Project and was a co-author of the Newport Coast Archaeological Project reports. He is currently Owner/Principal of Ecosys Solutions.

Judith F. Porcasi, Ph.D., received her doctorate from the University of Leicester School of Archaeology and Ancient History (UK) in 2008. She also holds an MS in archaeology from California State University, Northridge, and an Archaeology Certificate from UCLA. With a specialization in zooarchaeology, particularly as related to California coastal archaeofaunas, she has been working for more than 20 years in the Zooarchaeology Laboratory of the Cotsen Institute of Archaeology at UCLA and has supported numerous CRM projects as an independent contractor. She has authored numerous articles relating to mammals, birds, and fish from coastal and Channel Island sites and is currently supporting the ongoing UCLA Pimu Catalina Island Archaeology Project.

Ivan Snyder, avocational archaeologist, volunteers as a naturalist at the Point Vicente Interpretive Center in Rancho Palos Verdes. He also serves as Chairman of Ethnobotany for the South Coast Chapter of the Native Plant Society. His areas of expertise in ethnobotony include food plants, fiber (e.g., cordage making), and firecraft (e.g., fire drill technology). He has gained insight into artifact manufacture and artifact function through his experimental archaeology.